



**NEW**

### VENTO Ergo A25-1 Pro

Air capacity – up to 25 m<sup>3</sup>/h

Heat recovery – up to 85 %



#### ■ Use

- Arrangement of efficient energy-saving supply and exhaust single-room ventilation in flats, houses, cottages, social and commercial premises.
- Heat recovery minimises ventilation heat losses.
- Humidity balance and controllable air exchange create individually set microclimate.

#### ■ Design

Ventilation unit with automatic shutters (included into VENTO Ergo A25-1 Pro / Ergo A25-1 S Pro delivery set)

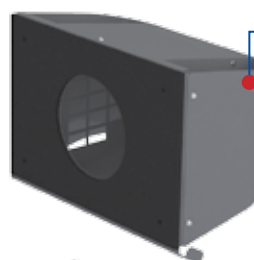


The fan is off  
(The shutters are CLOSED)

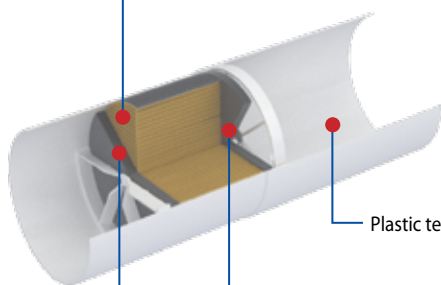


The fan is on  
(The shutters are OPENED)

Ceramic enthalpy energy accumulator (regenerator) with antibacterial coating



AH-S ventilation outer hood for thin walls  
(included into VENTO Ergo A25-1 S Pro delivery set)



Plastic telescopic air duct

G3 filters with antibacterial coating

Reversible axial fan with EC motor, integrated overheating protection and ball bearings

three-position switches

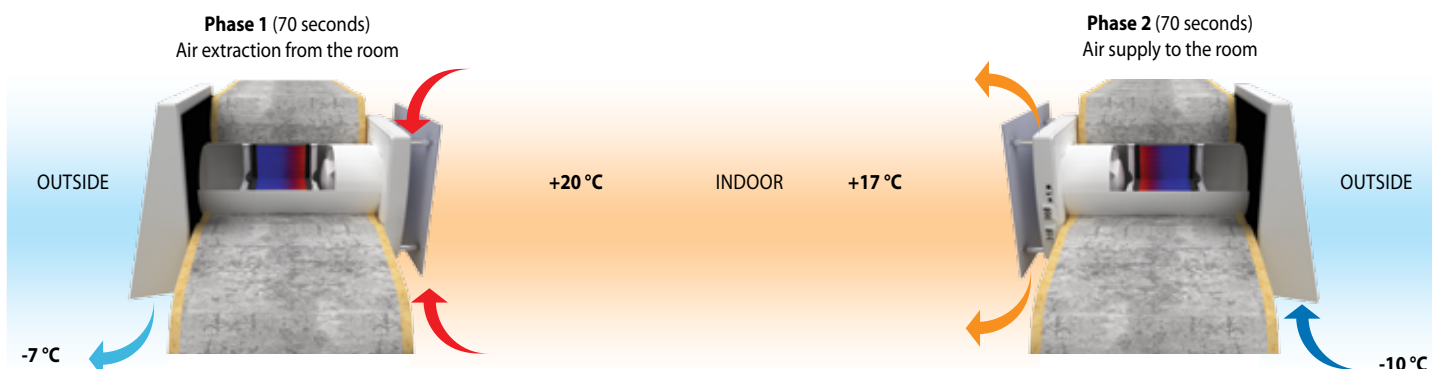


AH outer ventilation hood for standard wall thickness (included into VENTO Ergo A25-1 Pro delivery set)

#### ■ Heat and moisture regeneration

- High-tech ceramic energy accumulator with heat recovery up to 85 %.
- Due to its cellular structure it has a larger contact area surface and high efficiency. The energy accumulator is featured with excellent heat-conducting properties and thermal energy storage capacity.

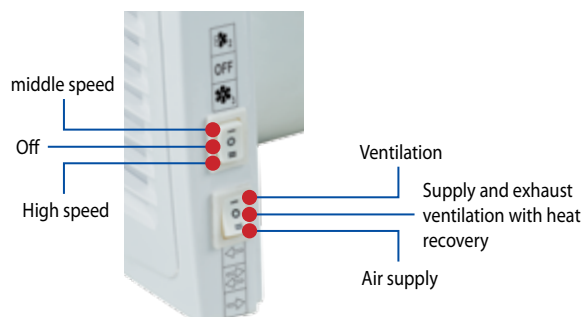
## Unit operating logic in winter period



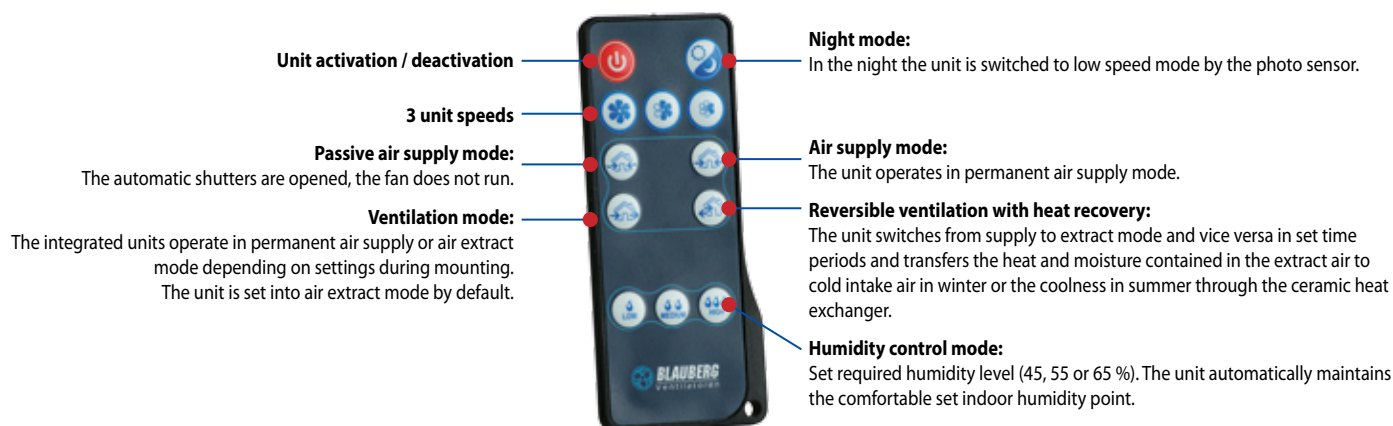
- Warm stale air is extracted from the premise, flows through the ceramic regenerator and transfers a part of the accumulated heat and moisture to it.
- As the ceramic regenerator gets warmed up, the unit switches to the supply mode.
- Clean cold intake air flows through the regenerator and absorbs accumulated heat and humidity.
- When the ceramic regenerator is cooled down, the unit is switched to the extract air mode.

## Control

- The unit operation mode control is performed by means of manual three-position switches located on the unit casing or using the remote controller.
- The unit is equipped with a humidity sensor for indoor humidity control and regulation.



## Remote control and operation mode selection:



## Mounting

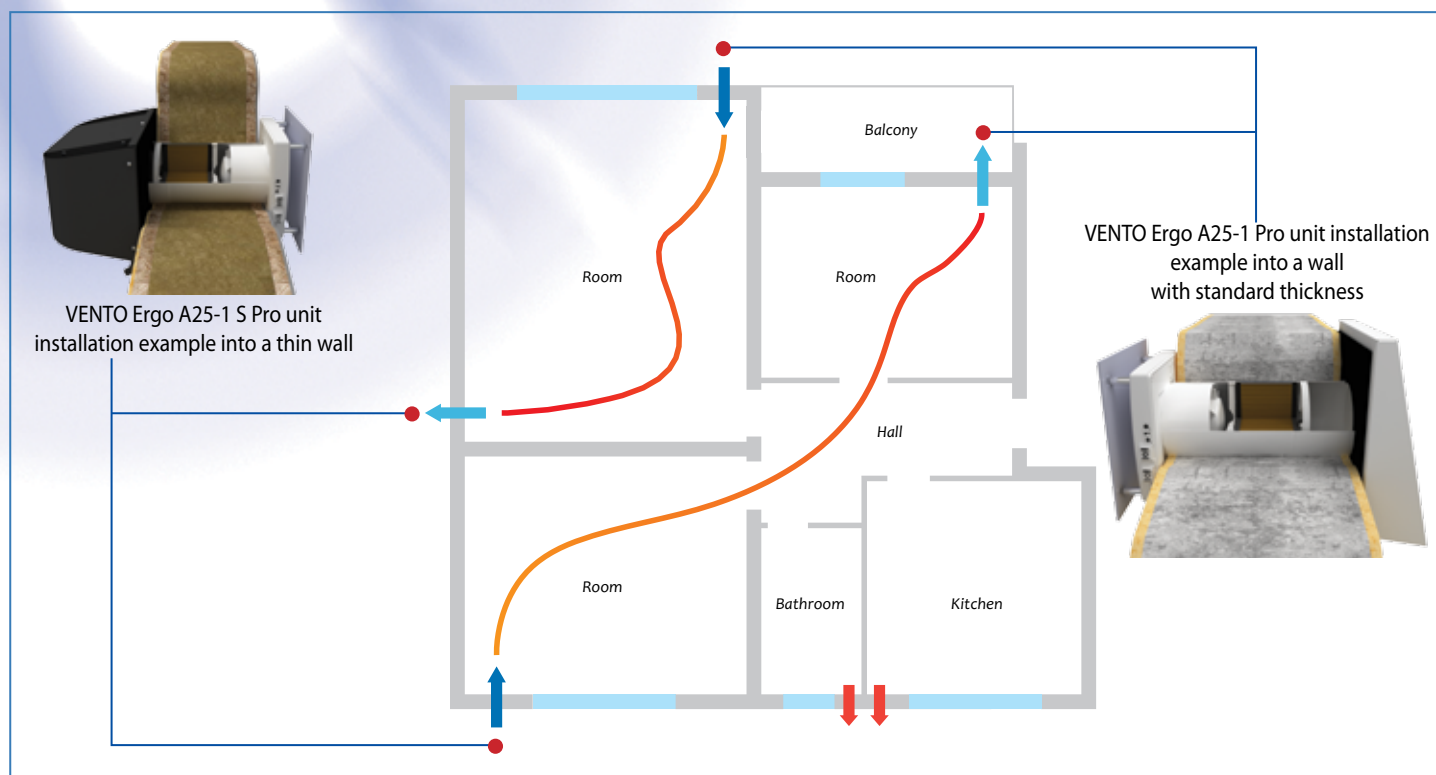
- The unit is designed for external through-the-wall installation inside a prepared round hole in the outer wall of the building.
- The best ventilation solution is pairwise installation of reverse phase connected units. Some units supply fresh air to the room and the other units extract stale air from the room. This allows to arrange the most efficient balanced ventilation.
- In case of brand new construction the units are mounted in two stages:
  - **pre-installation** at the stage of the indoor finishing and outer decorative wall

finishing. It includes installation of the telescopic air ducts, outer ventilation hood and laying out of electric cables.

• **final mounting** before commissioning of a house. It includes installation of the regenerator, the filters, connection of the ventilation unit.

- If mounting of the ventilation hood on the outer wall is undesirable it may be flush mounted and the external grille may be inserted into the outer window jamb using the **KIT BlauPlast 204x60-1** pre-installation kit. Available upon separate order.

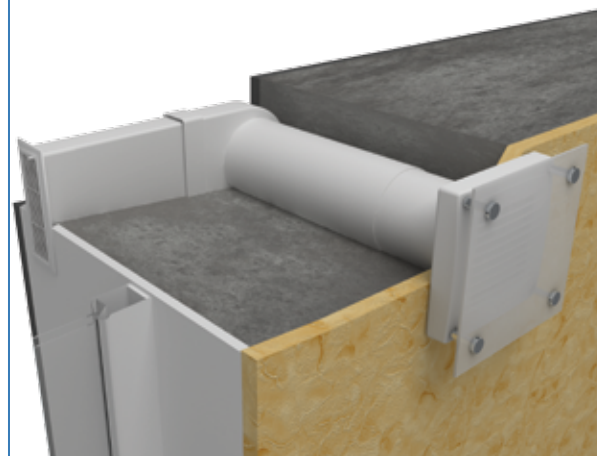
## HEAT RECOVERY SINGLE-ROOM UNITS



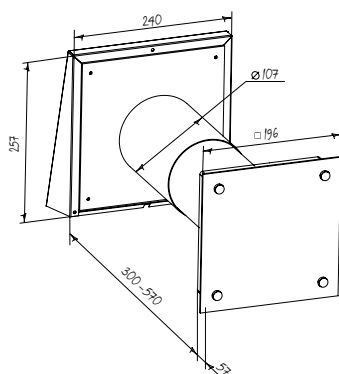
### Technical data

Parameters	VENTO Ergo A25-1 Pro VENTO Ergo A25-1 S Pro		
	1	2	3
Speed	1	2	3
Voltage / 50-60 Hz [V]	100-230		
Power [W]	3.68	4.15	5.59
Current [A]	0.024	0.027	0.038
RPM [min <sup>-1</sup> ]	1250	1397	2541
Air capacity [m <sup>3</sup> /h]	7	16	25
Sound pressure level at 1 m [dB(A)]	31	35	43
Sound pressure level at 3 m [dB(A)]	22	25	33
Outdoor sound pressure attenuation [dB(A)]	19		
Regeneration efficiency [%]	up to 85		
SEC class	A		
Ingress protection rating	IP24		

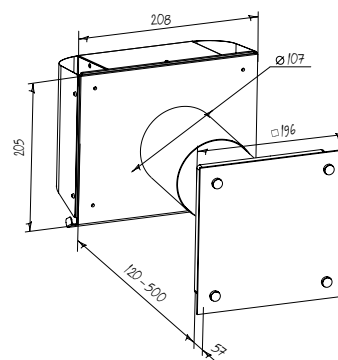
Angular mounting into a wall with standard thickness using **KIT BlauPlast 204x60-2**



## Overall dimensions



**VENTO Ergo A25-1 Pro**



**VENTO Ergo A25-1 S Pro**

## Accessories

Accessory name	Description
Pre-installation kit for mounting into a wall with standard thickness <b>Pre-installation Kit VENTO Ergo A25-1</b>	<input type="checkbox"/> Includes: <ul style="list-style-type: none"> <li>• Round Ø100 mm air duct, 300-570 mm long.</li> <li>• AH 100 outer ventilation hood.</li> <li>• Plastic foam plug.</li> </ul>
Pre-installation kit for mounting into a thin wall <b>Pre-installation Kit VENTO Ergo A25-1 S</b>	<input type="checkbox"/> Includes: <ul style="list-style-type: none"> <li>• Round Ø100 mm air duct, 120-500 mm long.</li> <li>• AH-S 100 outer ventilation hood.</li> <li>• Plastic foam plug.</li> </ul>
Final mounting kit <b>Completion Kit VENTO Ergo A25-1</b>	<input type="checkbox"/> Includes: <ul style="list-style-type: none"> <li>• Ceramic regenerator Ø100 mm.</li> <li>• VENTO Ergo A25-1 ventilation unit.</li> <li>• G3 filters.</li> </ul>
Remote control <b>FB-VENTO Ergo</b>	<input type="checkbox"/> For controlling the VENTO Ergo units.
Installation kit for angular mounting into a wall with standard thickness <b>KIT BlauPlast 204x60-2</b>	<input type="checkbox"/> Includes: <ul style="list-style-type: none"> <li>• Plastic ventilation grille 230x86 mm.</li> <li>• Plastic air duct 204x60 mm.</li> <li>• Plastic connecting bend from Ø150 to 204x60 mm.</li> </ul>