

## 5. Electrical Part

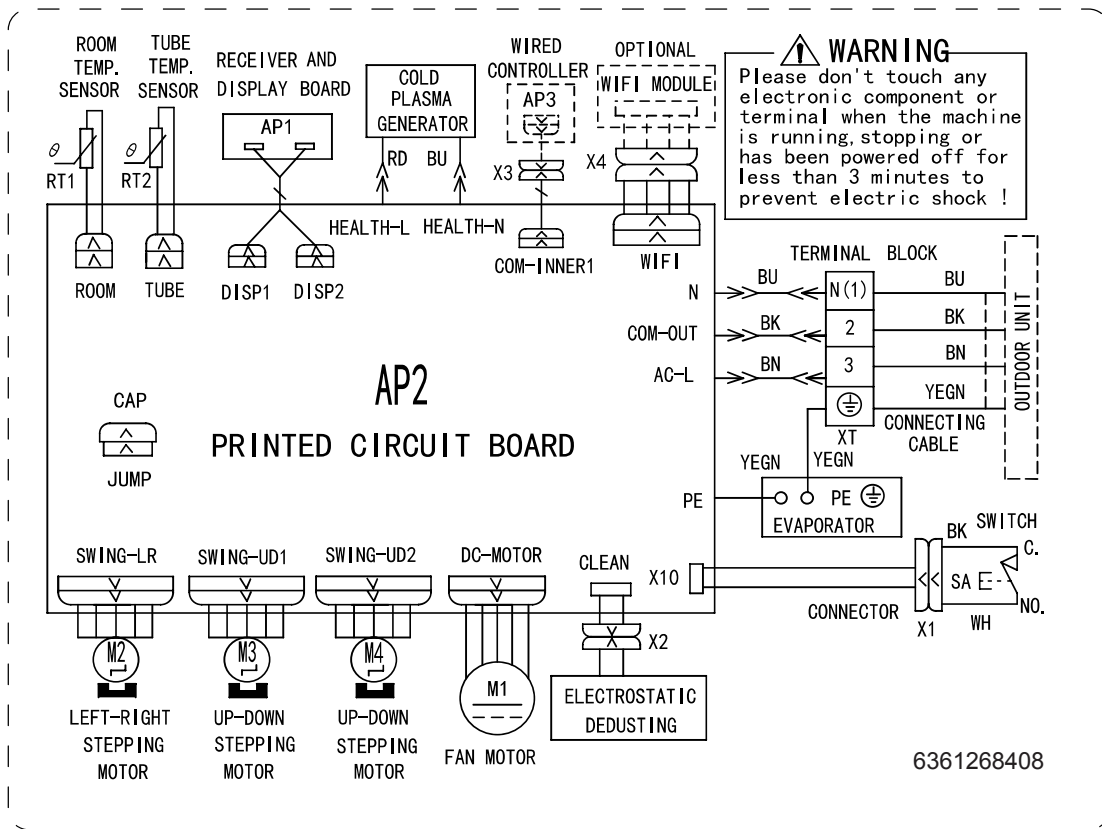
### 5.1 Wiring Diagram

#### ● Instruction

Symbol	Symbol Color	Symbol	Symbol Color	Symbol	Name
WH	White	GN	Green	CAP	Jumper cap
YE	Yellow	BN	Brown	COMP	Compressor
RD	Red	BU	Blue		Grounding wire
YEGN	Yellow/Green	BK	Black	/	/
VT	Violet	OG	Orange	/	/

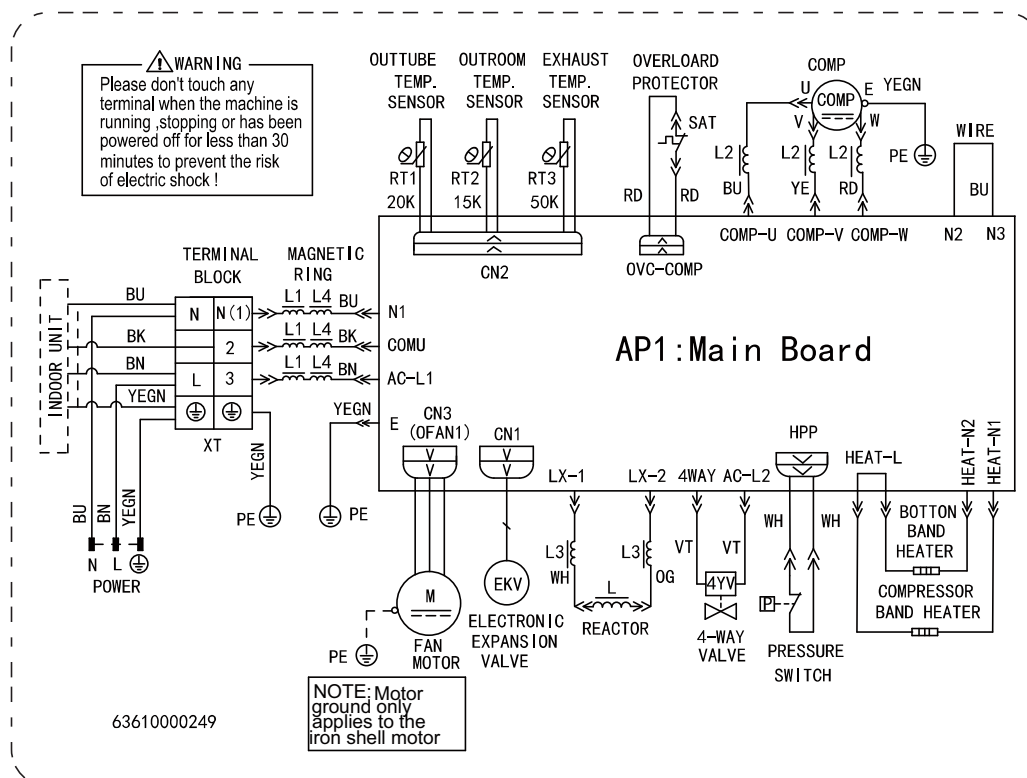
Note: Jumper cap is used to determine fan speed and the swing angle of horizontal lover for this model.

#### ● Indoor Unit



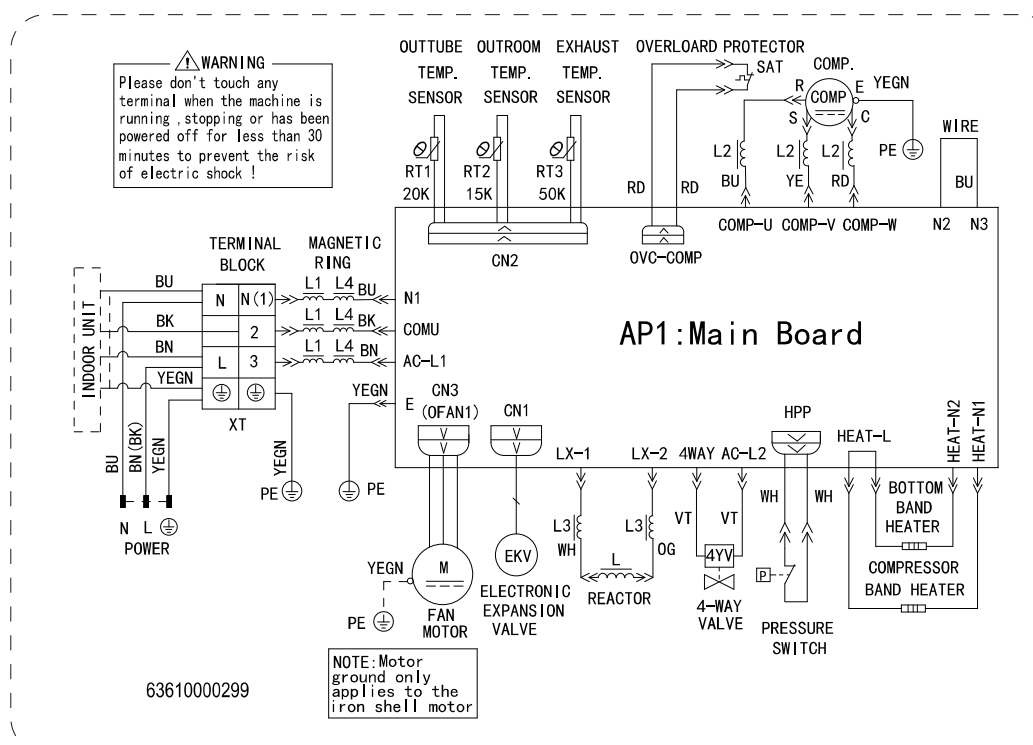
● Outdoor Unit

GWH09TA-S3DNA1D/O



GWH12TB-S3DNA1D/O

GWH12TB-S3DNA1F/O

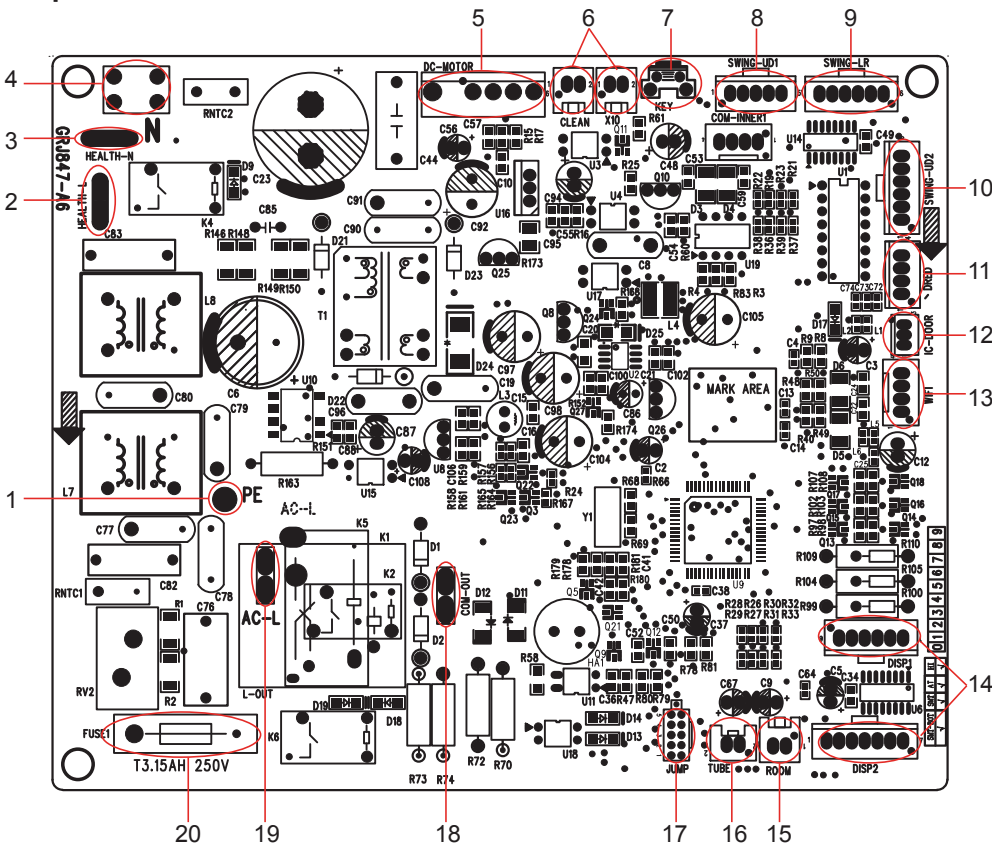


These wiring diagrams are subject to change without notice; please refer to the one supplied with the unit.

## 5.2 PCB Printed Diagram

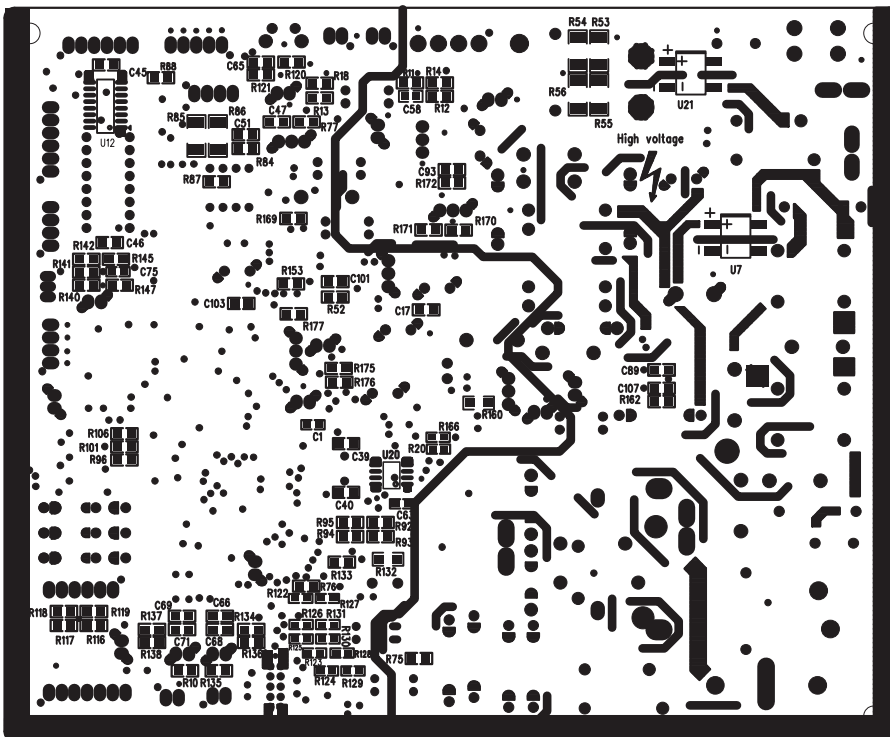
### Indoor unit

#### • Top view



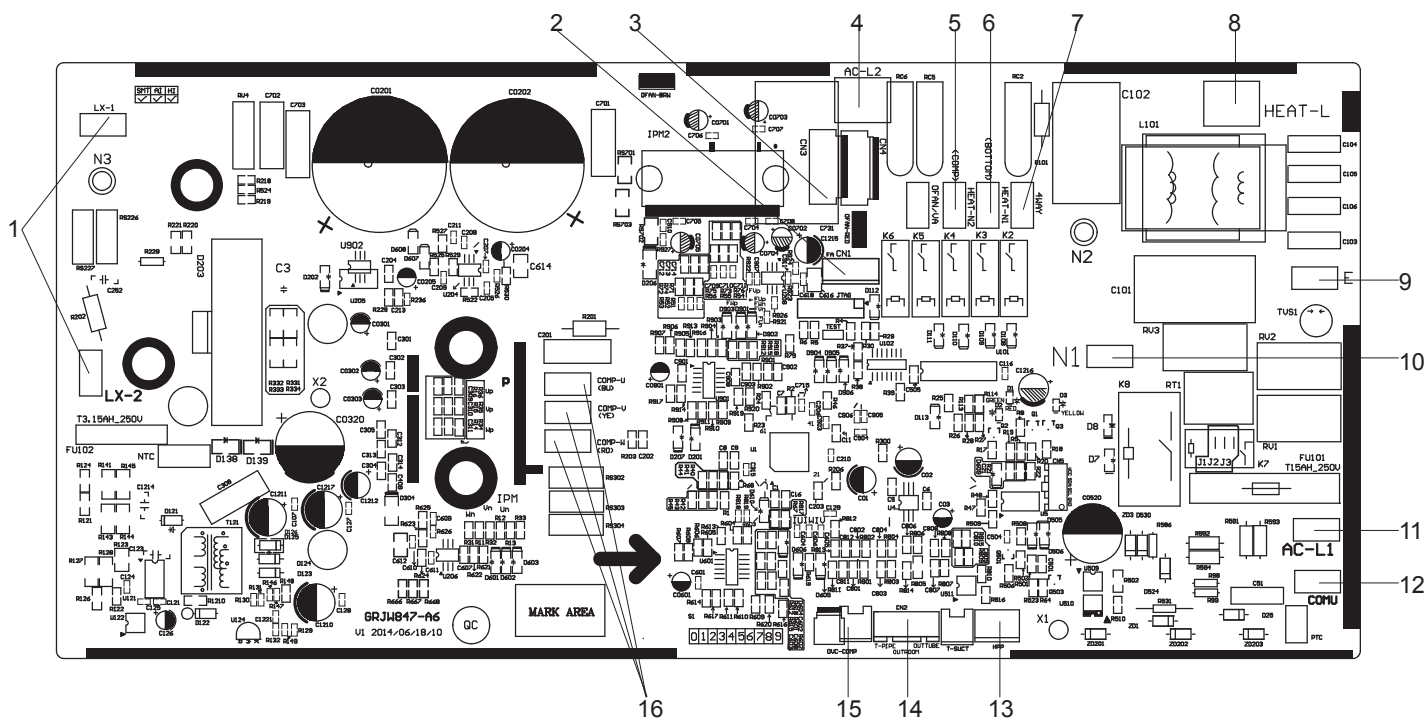
1	Grounding wire
2	Interface of health function live wire
3	Interface of health function neutral wire
4	Neutral wire
5	Interface of DC motor
6	Interface of electrostatic dedusting
7	Auto button
8	Up&down swing interface 1
9	left&right swing interface
10	Up&down swing interface 2
11	Interface of DRED
12	Interface of IC-DOOR
13	Interface of WiFi
14	Display interface
15	Interface of ambient temperature sensor
16	Interface of tube temperature sensor
17	Jumper cap
18	Communication interface
19	Live wire interface
20	Fuse

#### • Bottom view



## Outdoor unit

### ● Top view



1	Interface of reactor	5	Neutral wire of electric heater for compressor	9	Earthing wire	13	High pressure protection terminal HPP
2	Interface of electronic expansion valver	6	Neutral wire of electric heater for chassis	10	Power supply neutral wire	14	Temp. sensor
3	Interface of fan	7	Neutral wire of 4-way valve	11	Power supply live wire	15	Input of overload
4	Live wire of 4-way valve	8	Live wire of electric heater	12	Communication wire with indoor and outdoor unit	16	U, V, W three phases of compressor

### ● Bottom view

